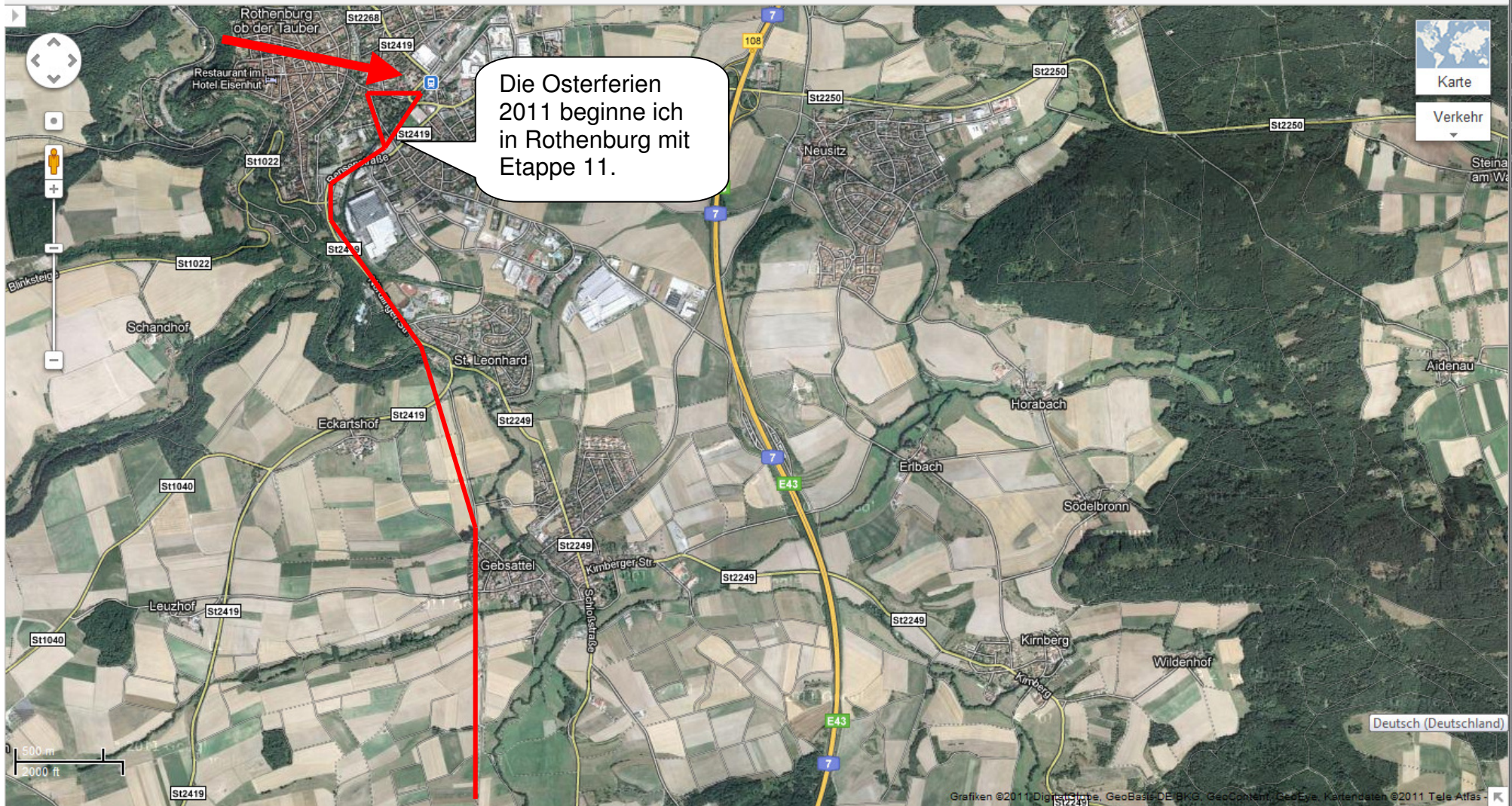


Karte 44

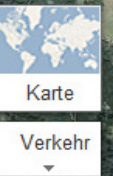
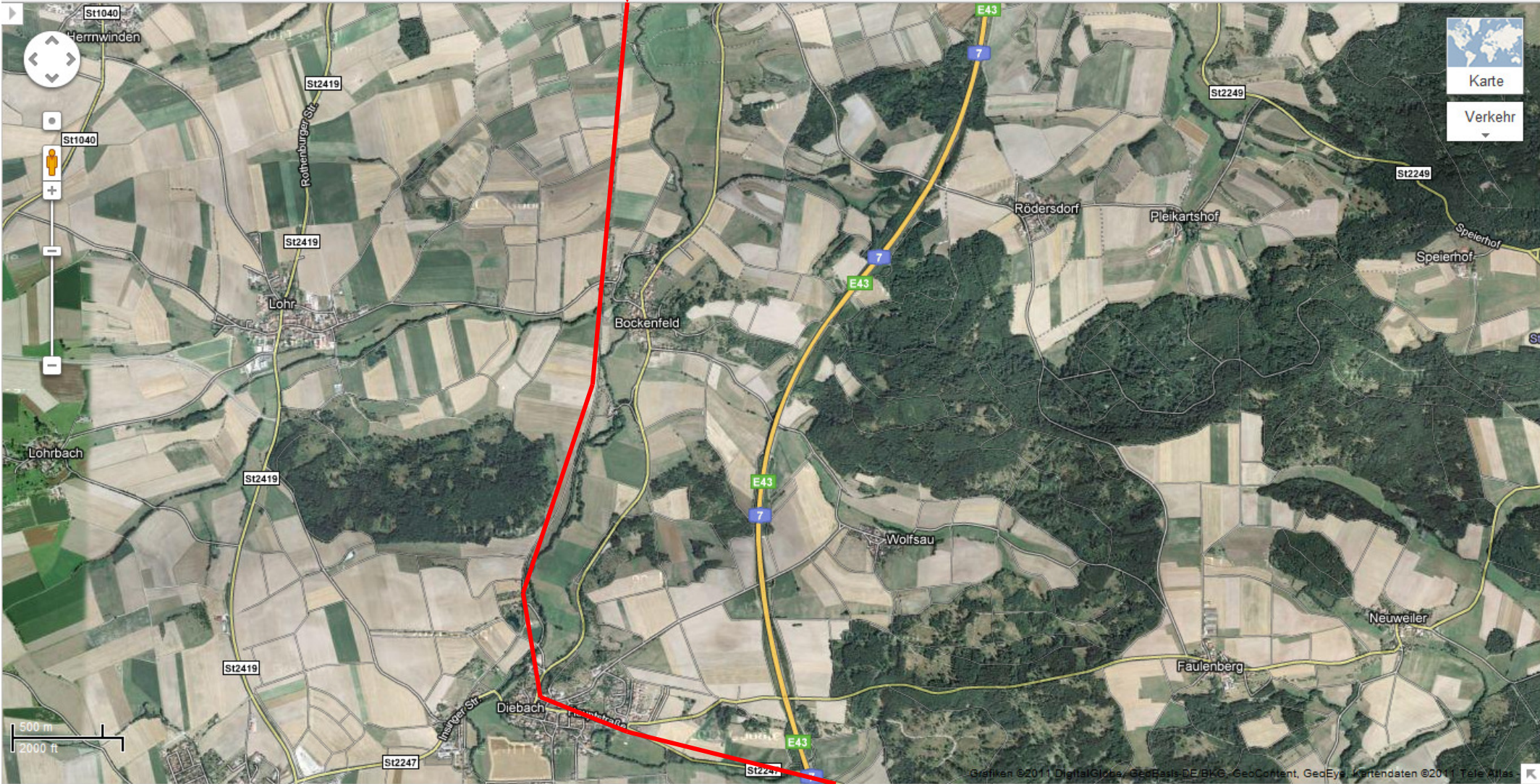
Google



Die Osterferien 2011 beginne ich in Rothenburg mit Etappe 11.

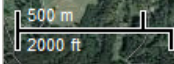
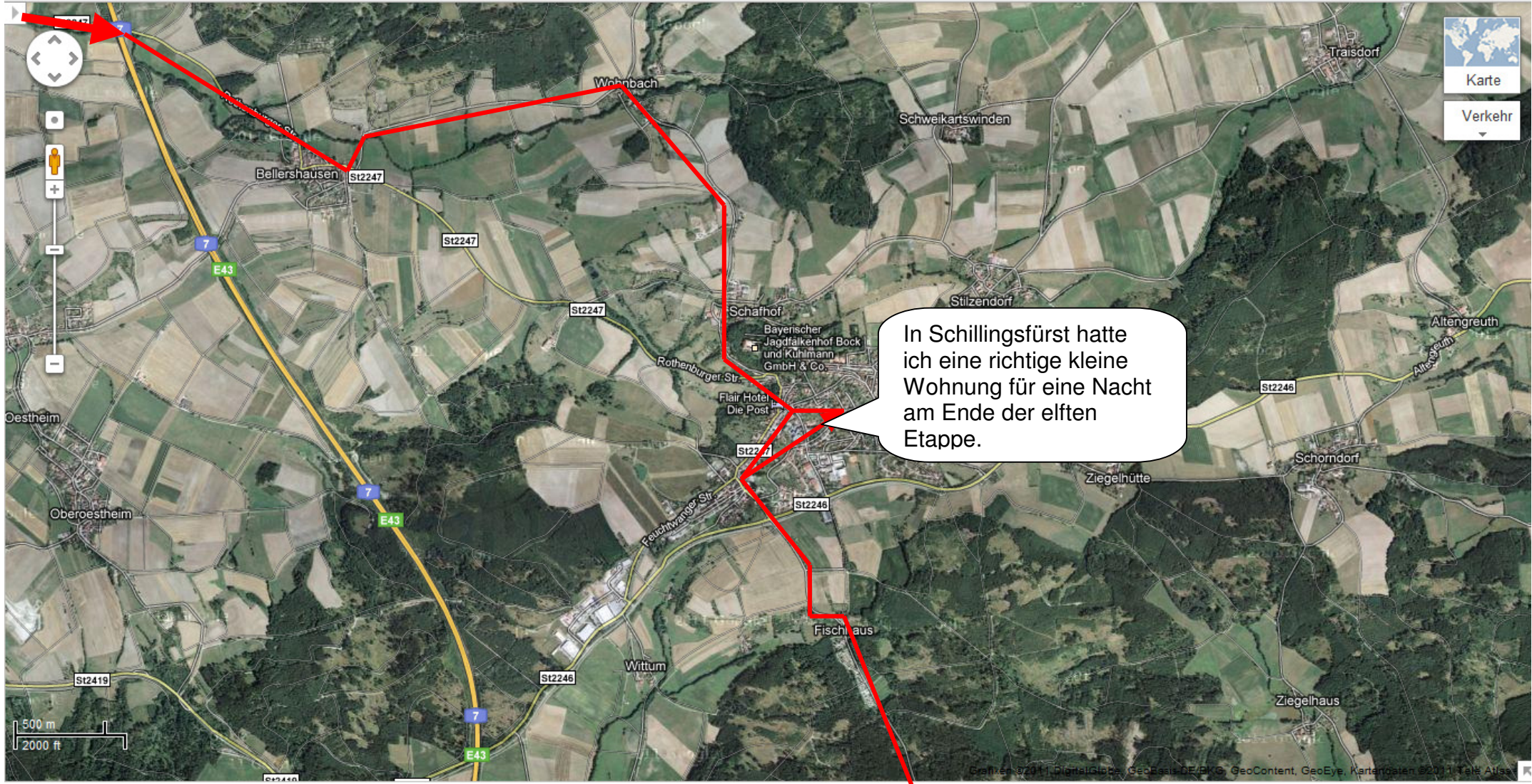
Windows taskbar area containing the Start button, taskbar icons for applications like Kl..., 11..., W..., D..., Bil..., N..., and Pil..., and the system tray showing the date and time as 19:49.

Karte 45

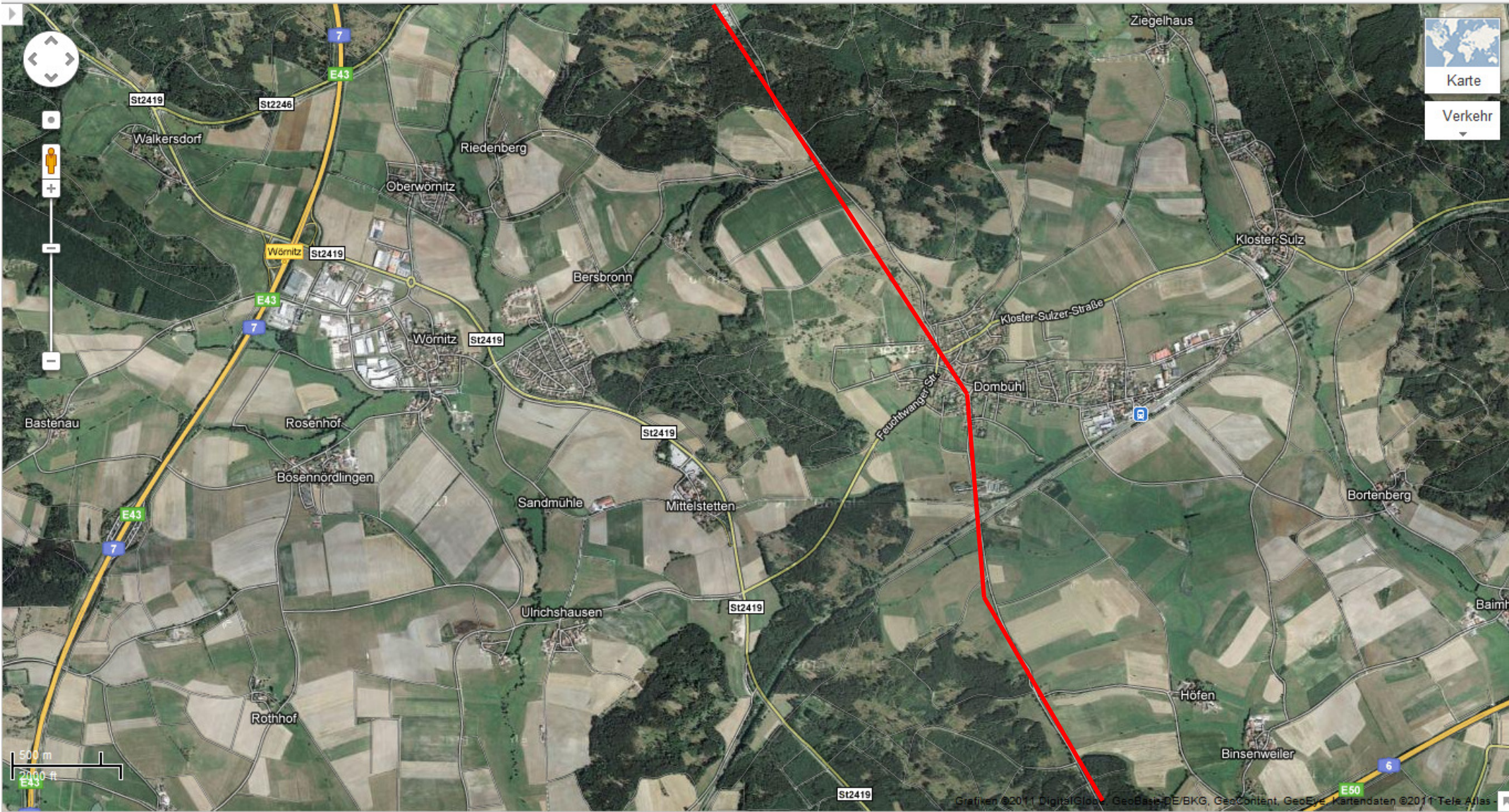




Karte 46



Karte 47



Karte
 Verkehr



Karte 48

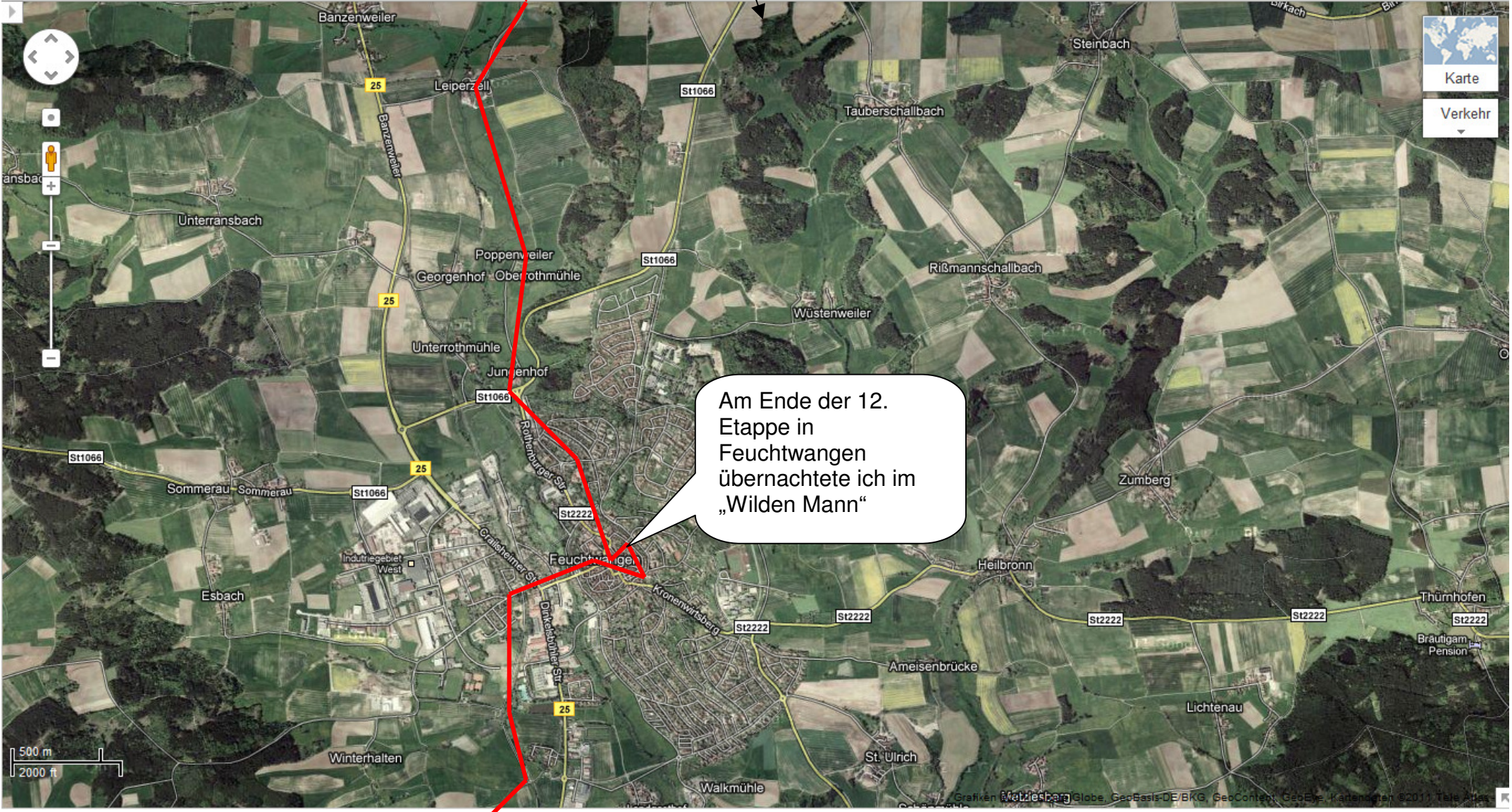


Karte

Verkehr



Karte 49



Am Ende der 12. Etappe in Feuchtwangen übernachtete ich im „Wilden Mann“

Google Maps - Mozilla Firefox

Datei Bearbeiten Ansicht Chronik Lesezeichen Extras Hilfe

GMX GMX - E-Mail... Wetter Gelnh... Wetterbericht... Wetter Lohr, ... Google Ma... x Bank of Scot... Persönlicher ... WEB.DE - E-M... tagesschau | t... : Meine Watc... Pilger001.pdf ... Namenlos +

+Ich Web Bilder Videos Maps News Mail Mehr - Anmelden

Google

Karte 50

Winterhalten St. Ulrich Walkmühle Landgasthof Walkmühle Inh. Hünner-Thomas Schönmühle Metzlesberg

Überschlagmühle 25 25 25 Koppenschallbach Volkertsweiler Bernau

Hermeschallbach Krapfenau

Sulzsch Zendorf Krapfenau

Mögersbronn

Sulzsch

Deutenbach Schopfloch

Lamden

Hülstetten Kaltenbronnweier Kaltenbronn Hofweier Lorenzenweier

Tribur Hülgenkreuz

Oberhinterhof Unterhinterhof

500 m 2000 ft

Grafiken ©2011 DigitalGlobe, GeoEye, GEBCO, GeoContent, GeoEye, Kartendaten ©2011 Tele Atlas

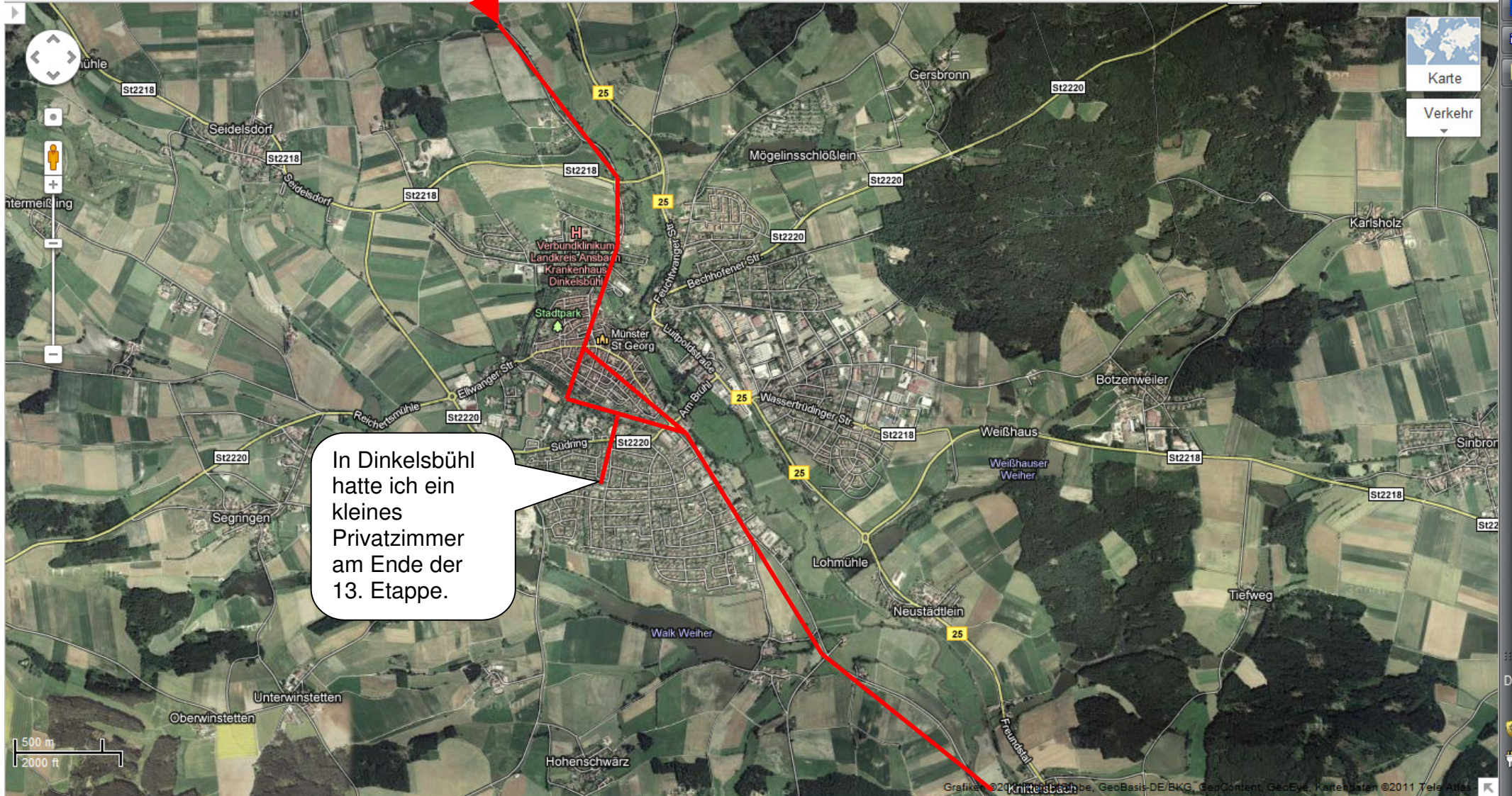
DE < > 23:06

Karte 51

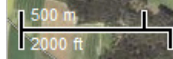


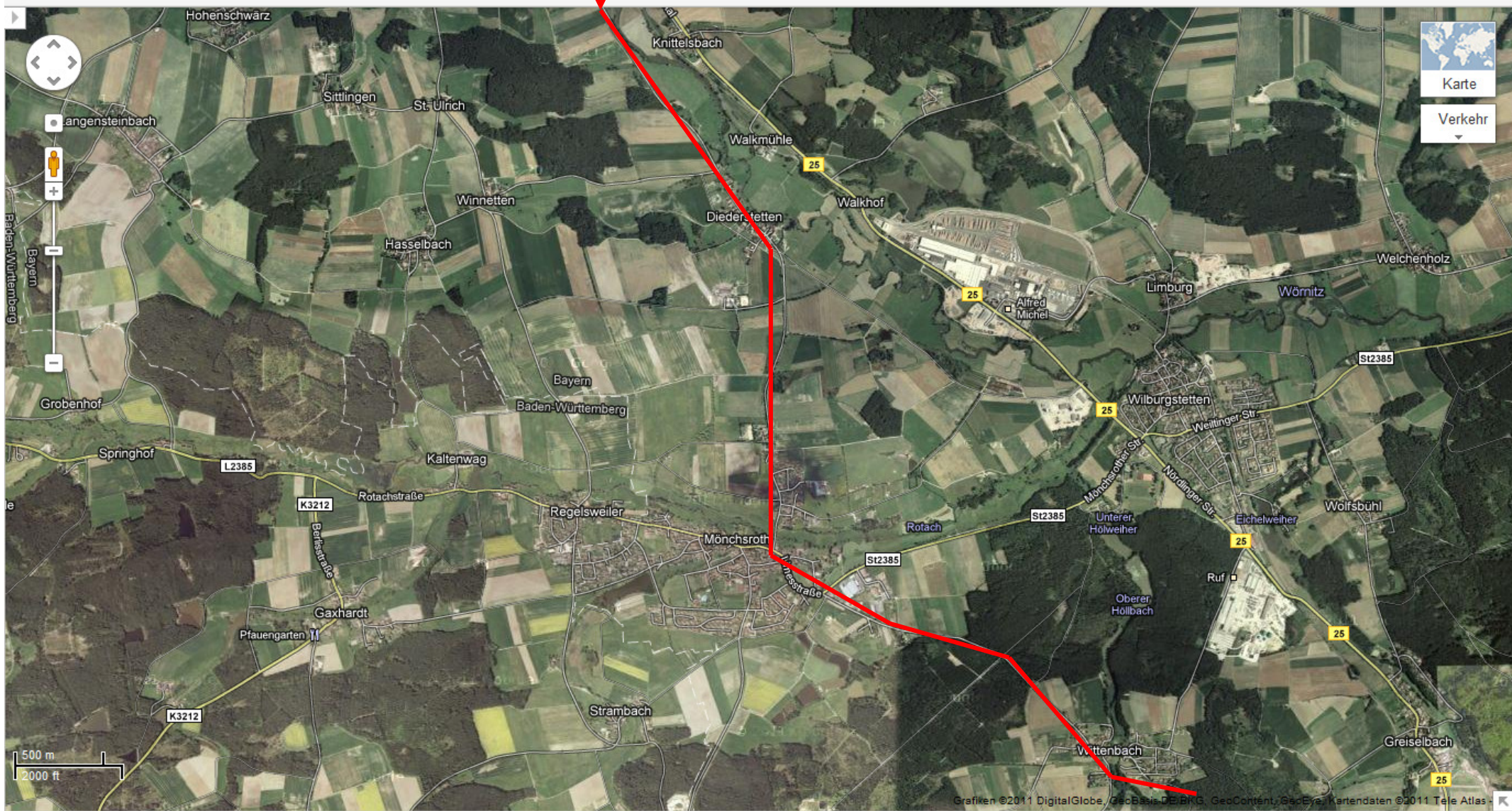
Karte 52

Google



In Dinkelsbühl hatte ich ein kleines Privatzimmer am Ende der 13. Etappe.

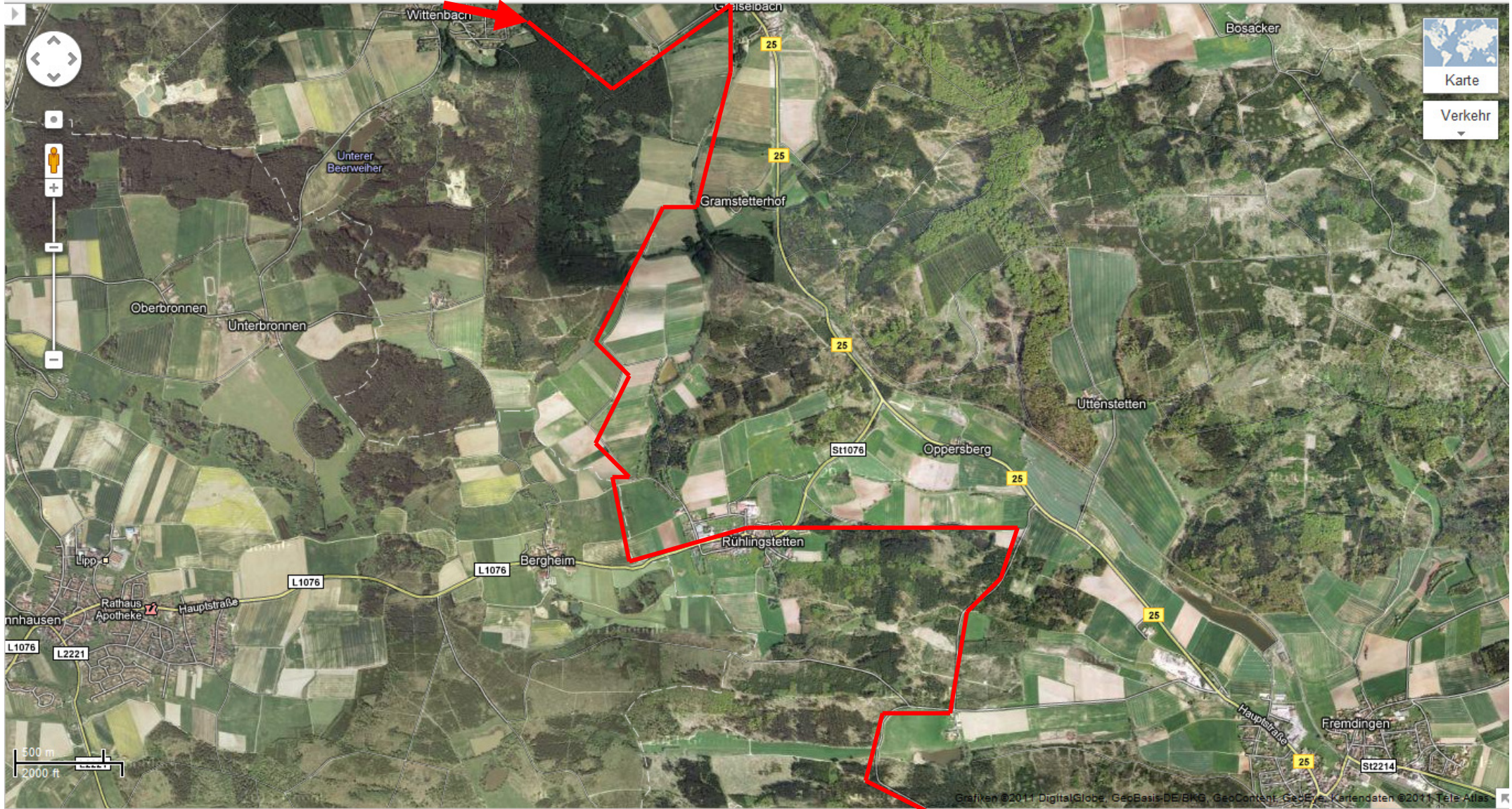




Karte
Verkehr

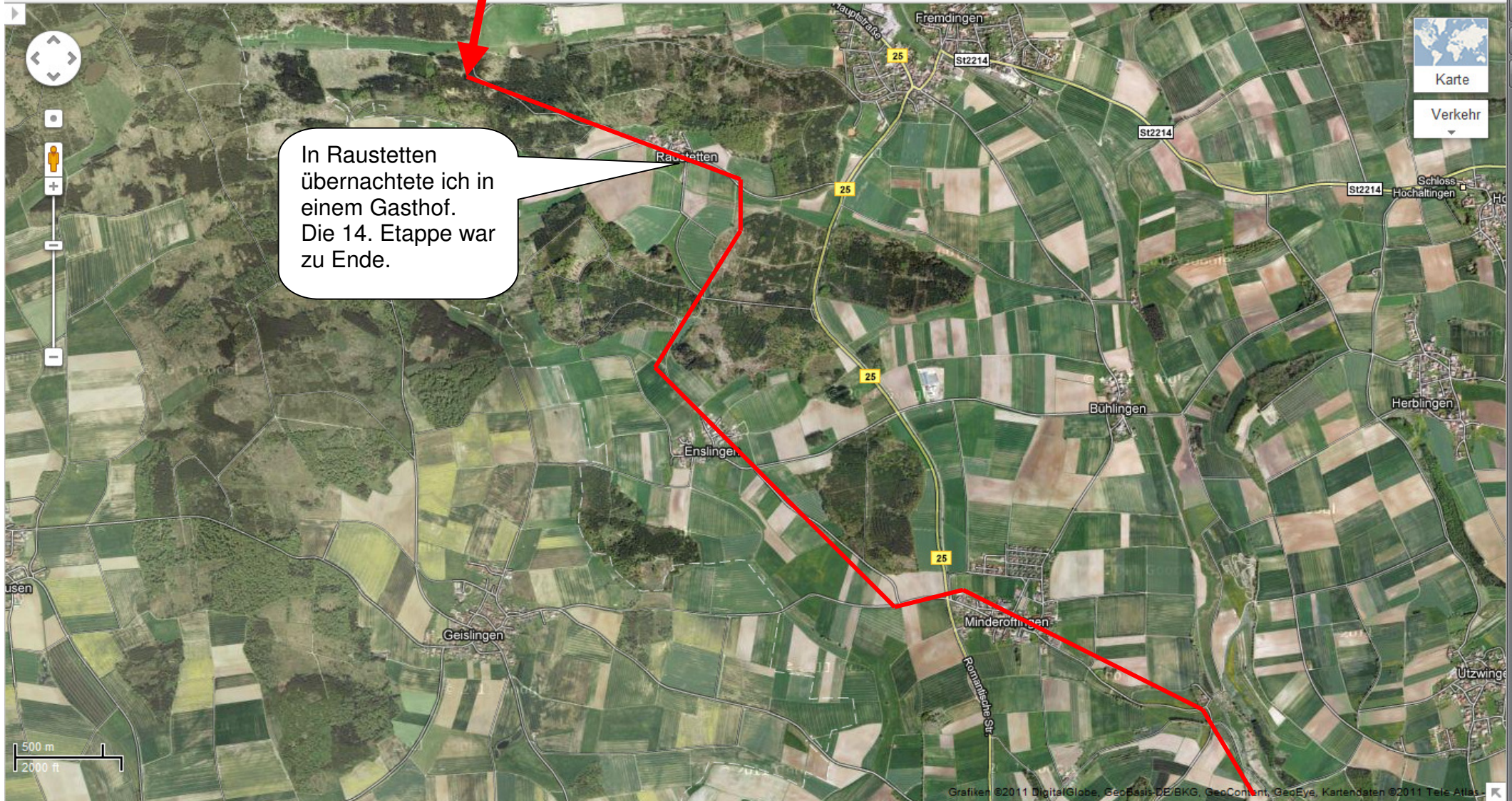


Karte 54

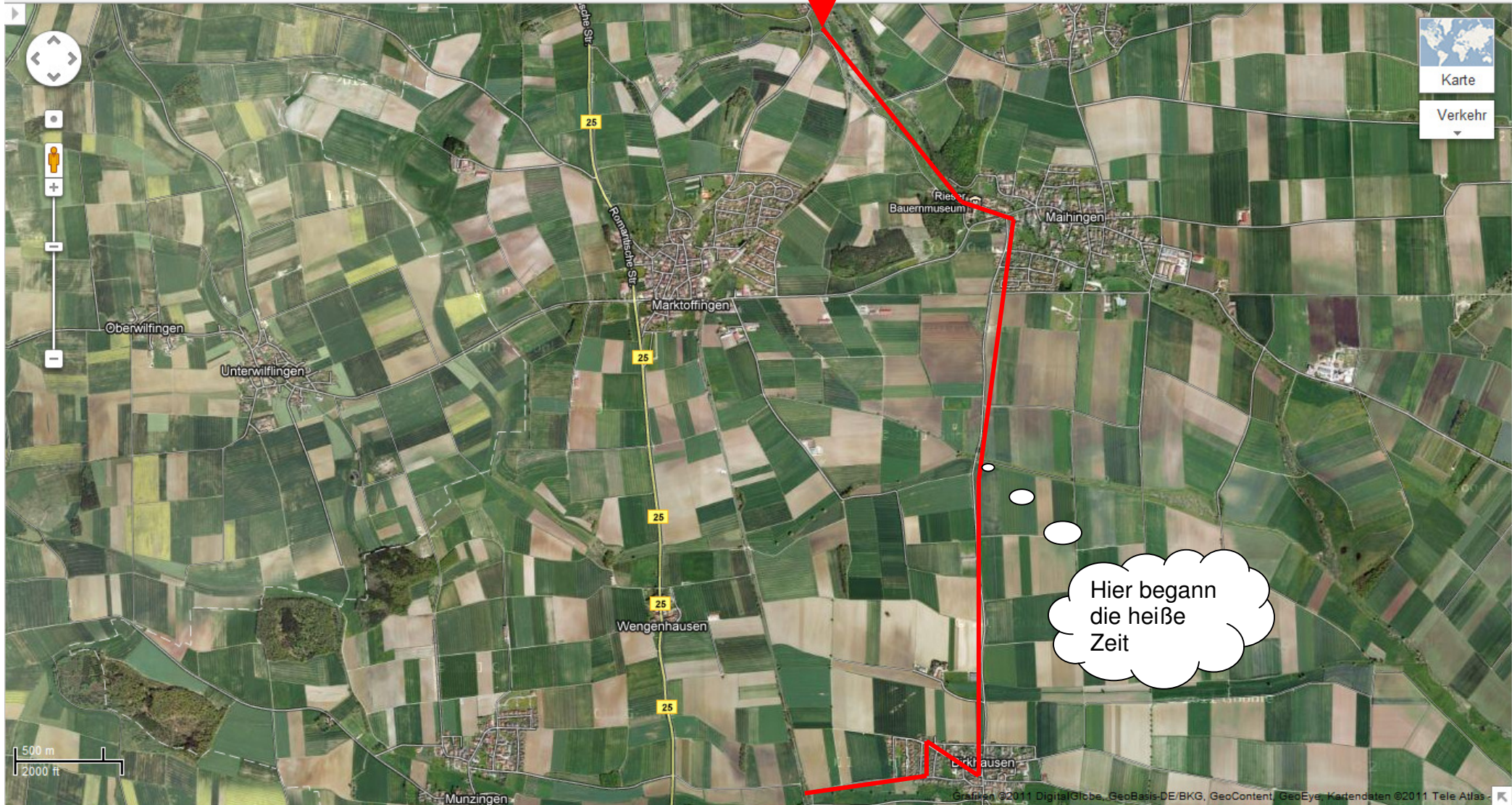


Karte
 Verkehr

Karte 55



Karte 56

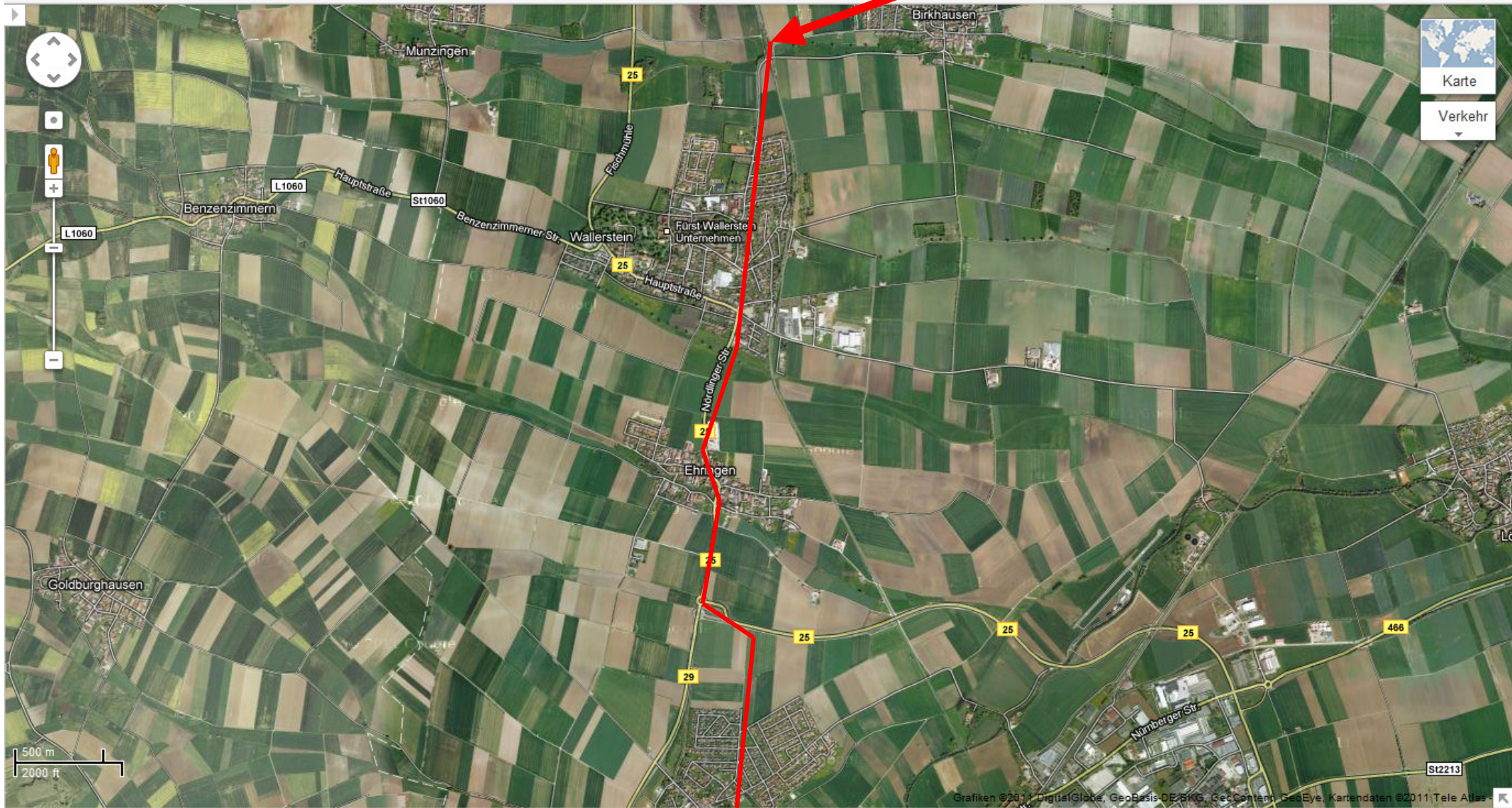


Karte
Verkehr

500 m
2000 ft

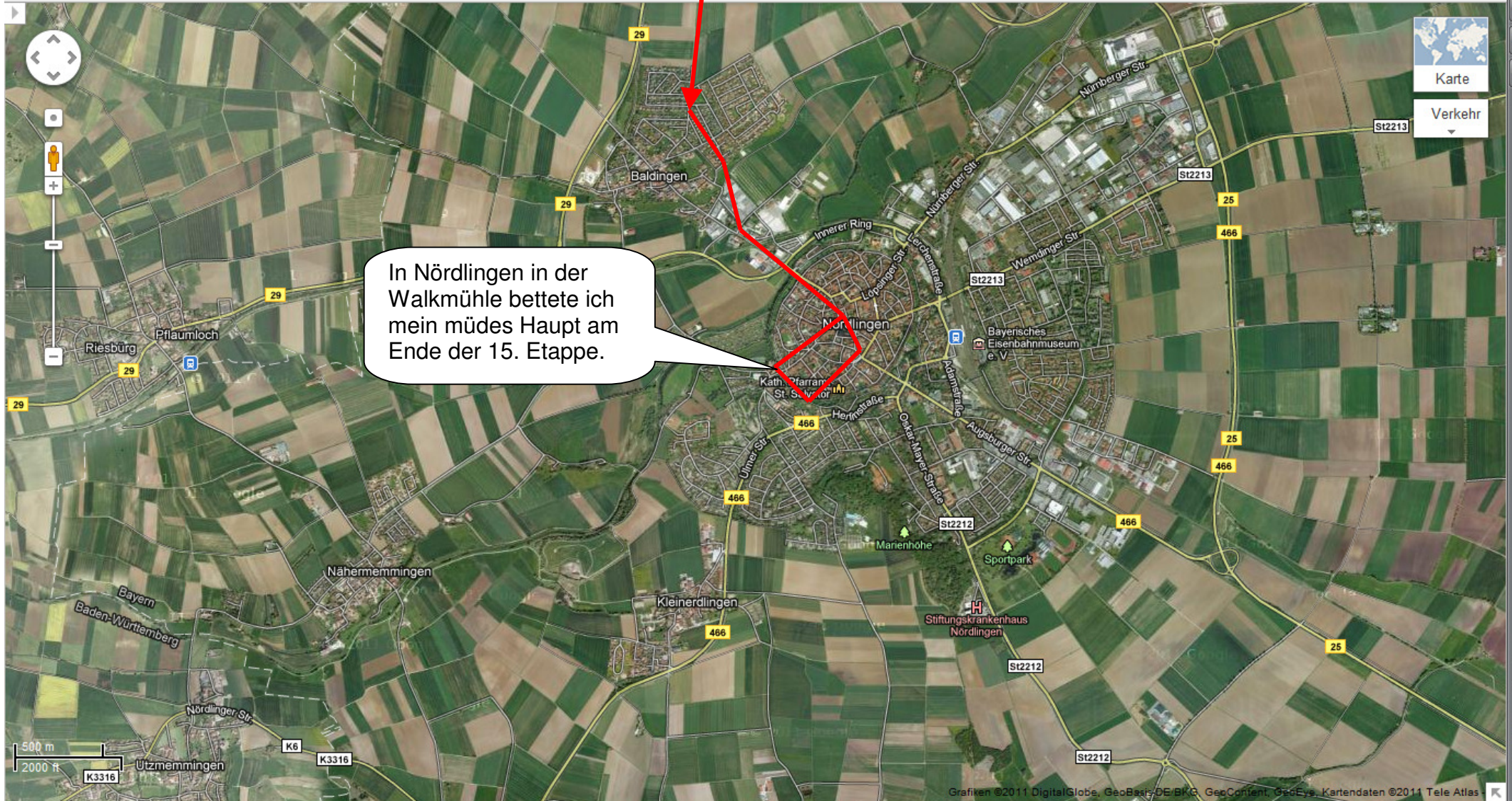
Karte 57

Google



Karte
 Verkehr

Karte 58



In Nördlingen in der Walkmühle bettete ich mein müdes Haupt am Ende der 15. Etappe.