

ljubljana - Google Maps - Mozilla Firefox

Datei Bearbeiten Ansicht Chronik Lesezeichen Extras Hilfe

Wander... Wetter ... Wetter ... GMX GMX - E... CX90_M... : Meine ...

maps.google.de

MaO kus Gelnhausen

+Horst Suche Bilder Maps Play YouTube News Mail Docs Kalender Mehr

Google ljubljana

Horst Gunkel + Mitteilen

Trstenik

Rigonce Harmica Senkovec

Ključ Brdovečki

Gornji Trnaduč Donji Laduč Prigone Brdovečko

Prudnice

Savski Marof

Zdenci Brdovečki Javorje

Jesenice

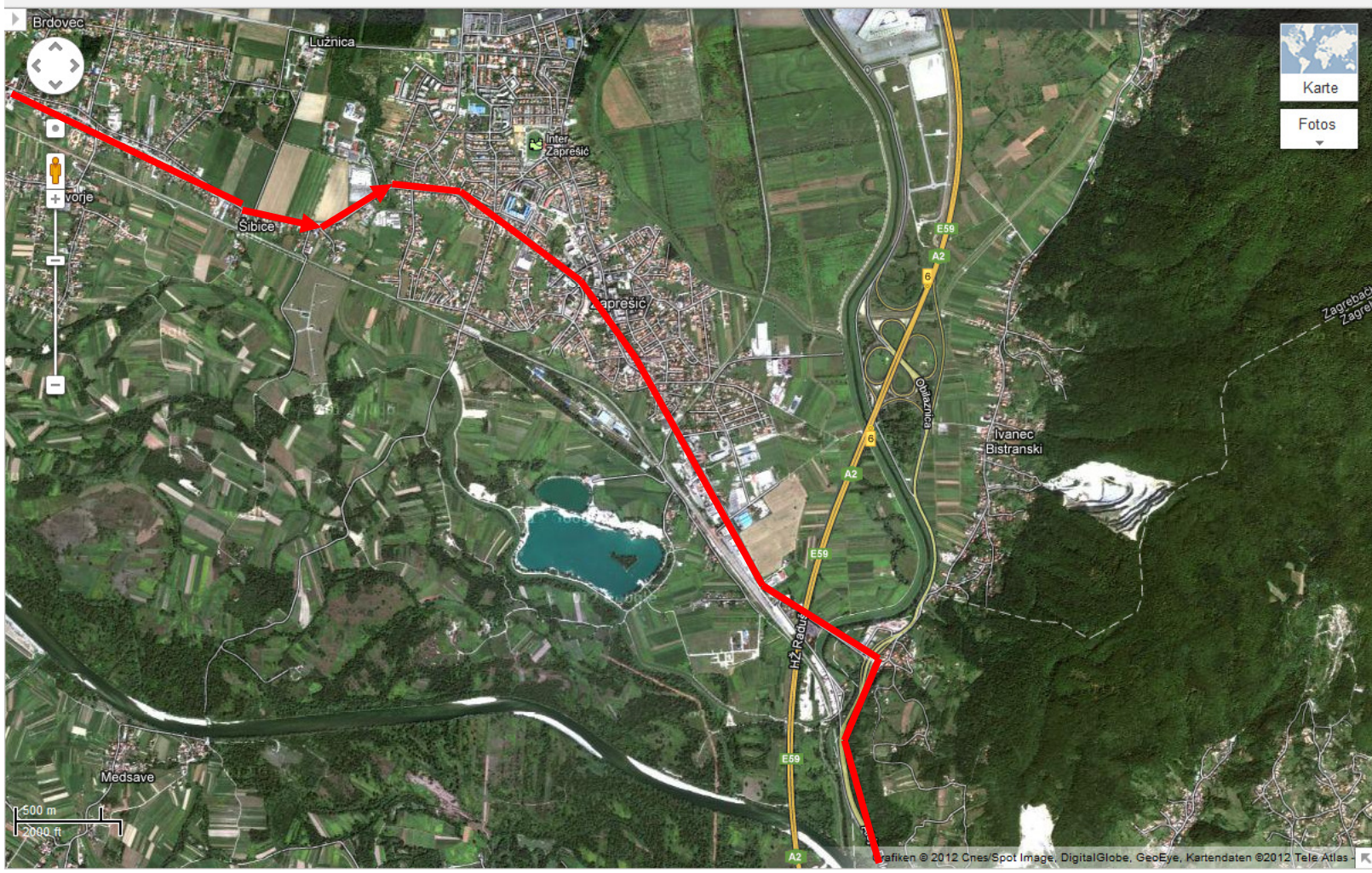
Obrežje

500 m 2000 ft

Grafiken © 2012 Cnes/Spot Image, DigitalGlobe, GeoEye, Kartendaten © 2012 Google, Tele Atlas

22:22
20.04.2012

Karte 173

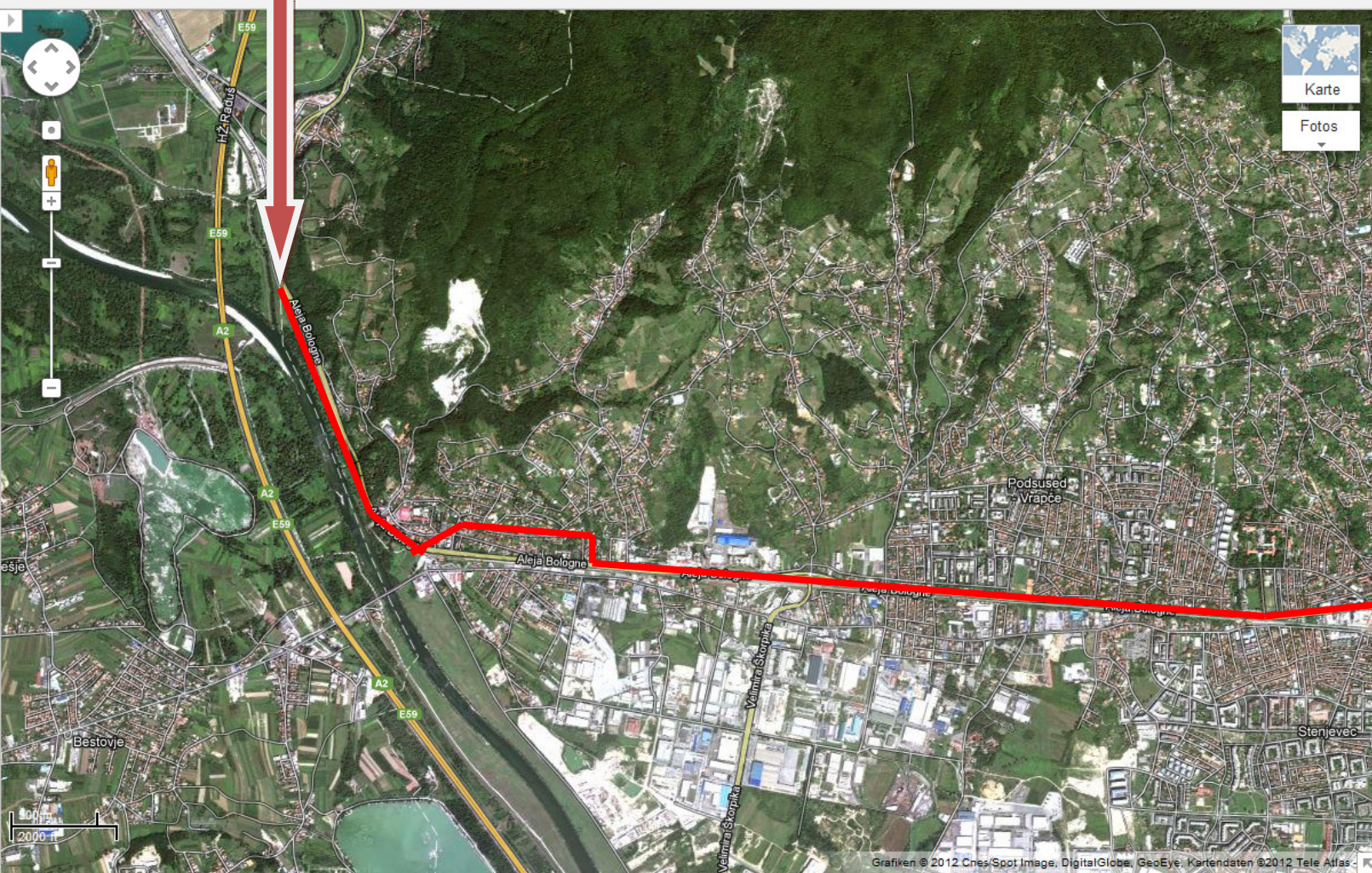


Karte 174

Windows taskbar with icons for:

- Windows Start button
- Microsoft Office applications: Word, PowerPoint, Excel
- Internet Explorer
- Skype
- Adobe Reader
- Windows Explorer
- System tray icons: Network, Volume, Power
- System clock: 22:23, 20.04.2012

Karte 175



Windows taskbar with various application icons including Internet Explorer, Word, PowerPoint, Firefox, and a folder icon. At the bottom right, the system tray shows the time as 22:24 and the date as 20.04.2012.

Karte 176

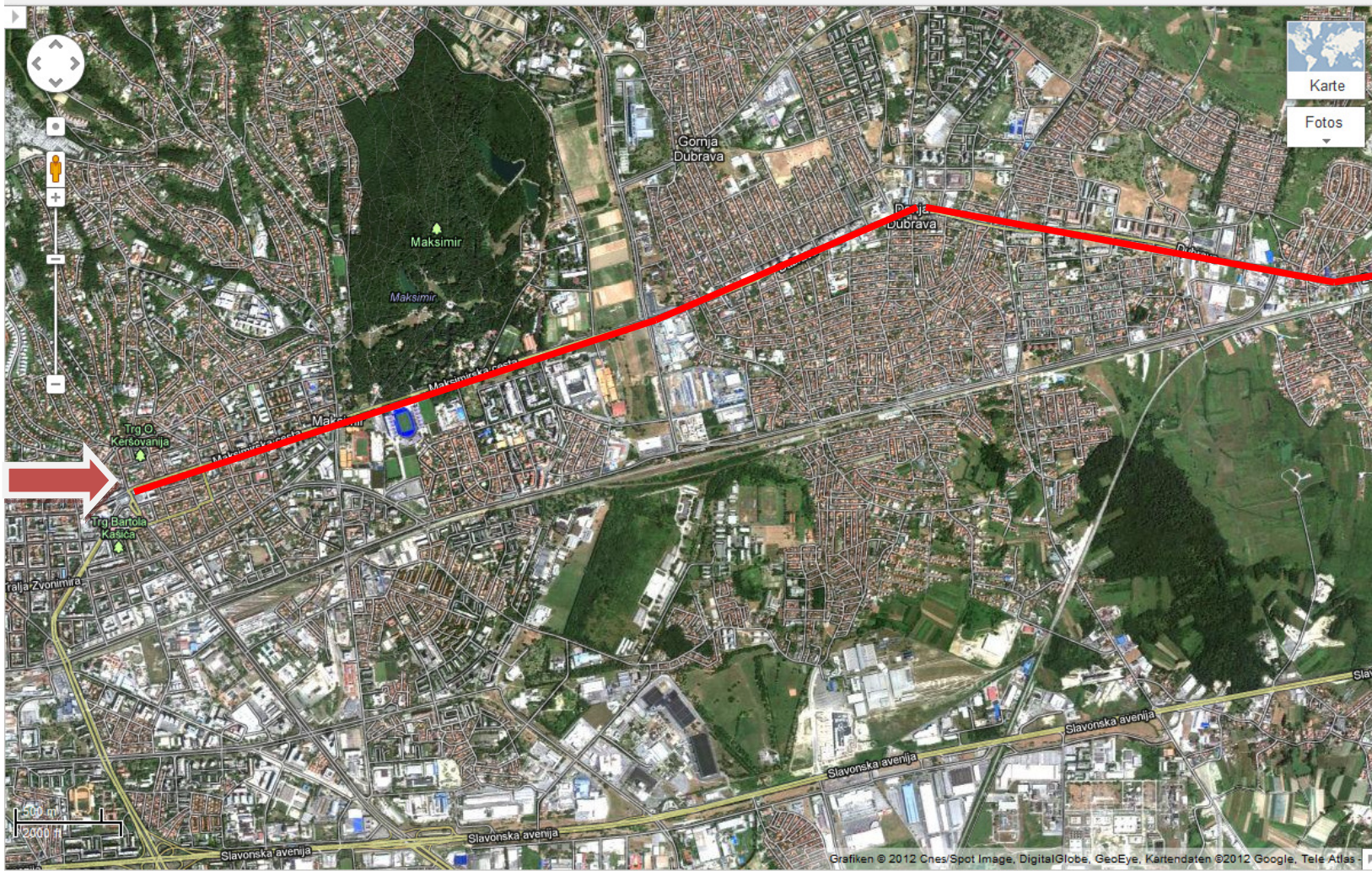


Windows taskbar with icons for:

- Windows Start button
- Microsoft Office Word
- Microsoft Office PowerPoint
- Firefox
- Internet Explorer
- 3D Home
- Skype
- Adobe Reader
- File Explorer
- System tray icons: Network, Volume, Power
- System clock: 22:25, 20.04.2012

Karte 177

Google ljubljana



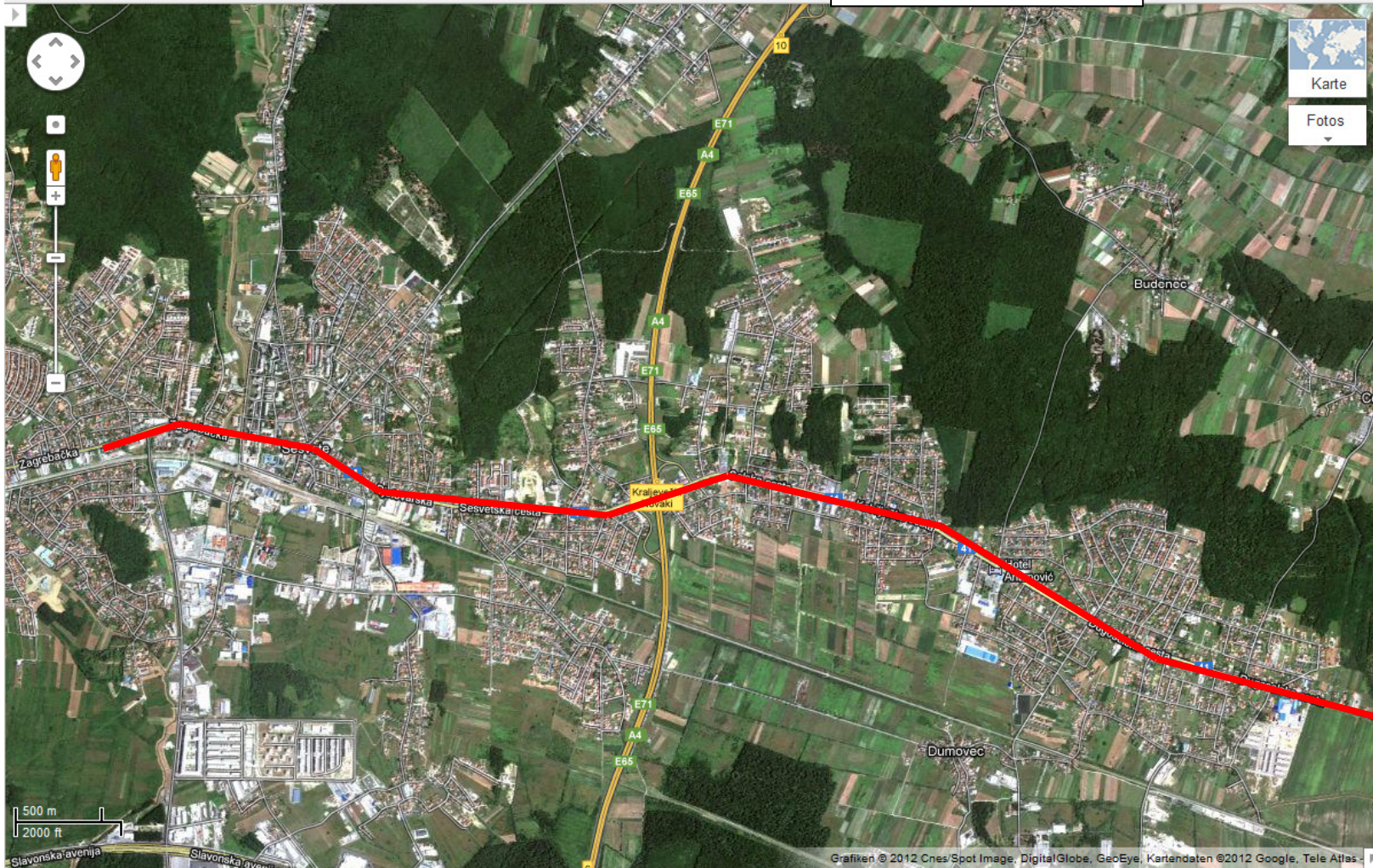
Windows taskbar with various application icons including Internet Explorer, Microsoft Office (Word, PowerPoint, Excel), and other utilities. The system clock at the bottom right shows the time 22:26 and the date 20.04.2012.



ljubljana

Karte 178

+ Mitteilen



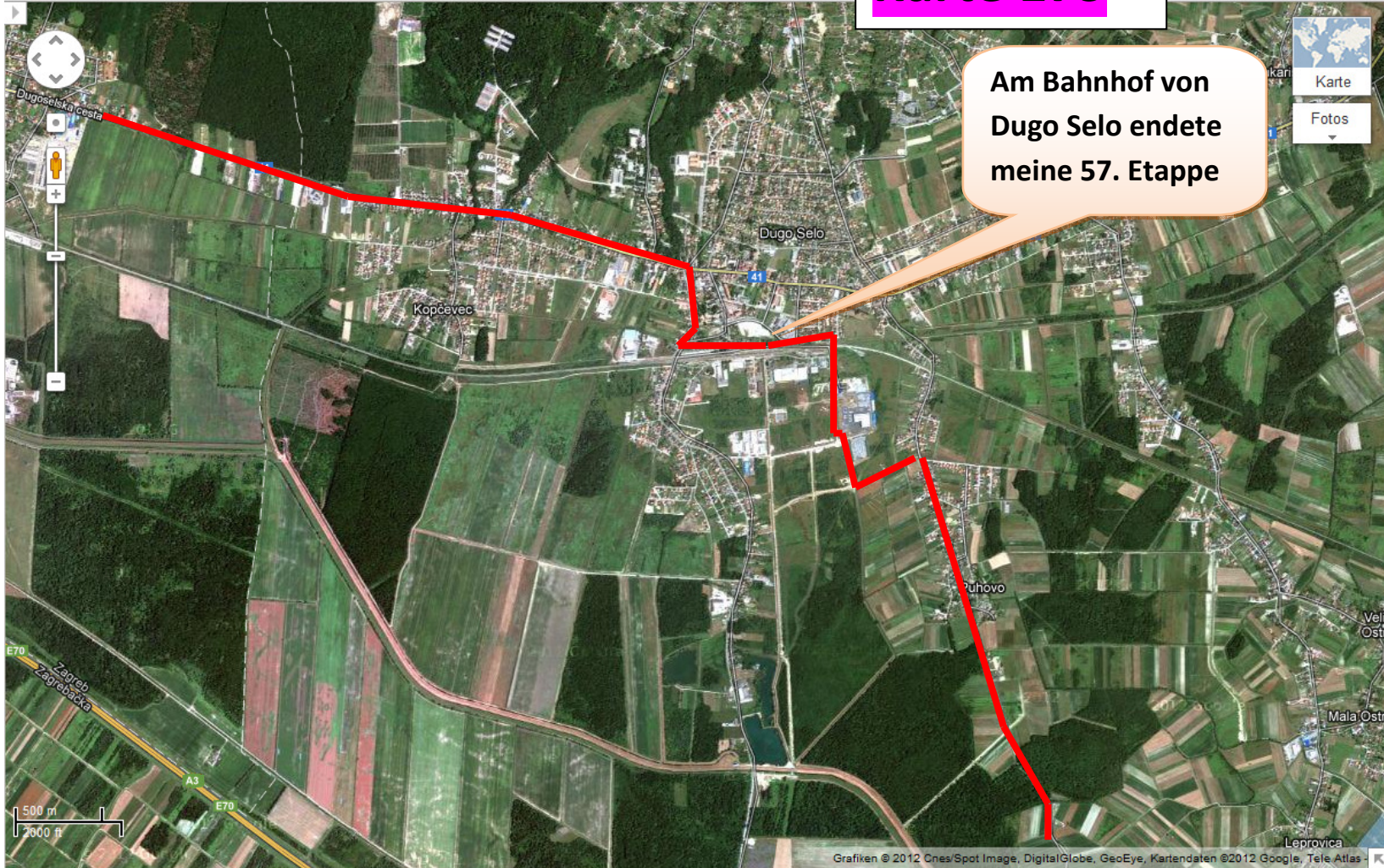
- Windows Start button
- Office applications: Word, PowerPoint, Outlook
- Internet Explorer
- Skype
- PDF Reader
- File Explorer
- System tray: Volume, Network, System clock (22:27, 20.04.2012)

Google

ljubljana

Karte 179

Am Bahnhof von Dugo Selo endete meine 57. Etappe



Windows taskbar with icons for Internet Explorer, Microsoft Office (Word, Excel, PowerPoint), Firefox, Skype, Adobe Reader, and a folder icon. The system tray shows the time 22:30 and the date 20.04.2012.

Karte 180



ljubljana



Horst Gunkel

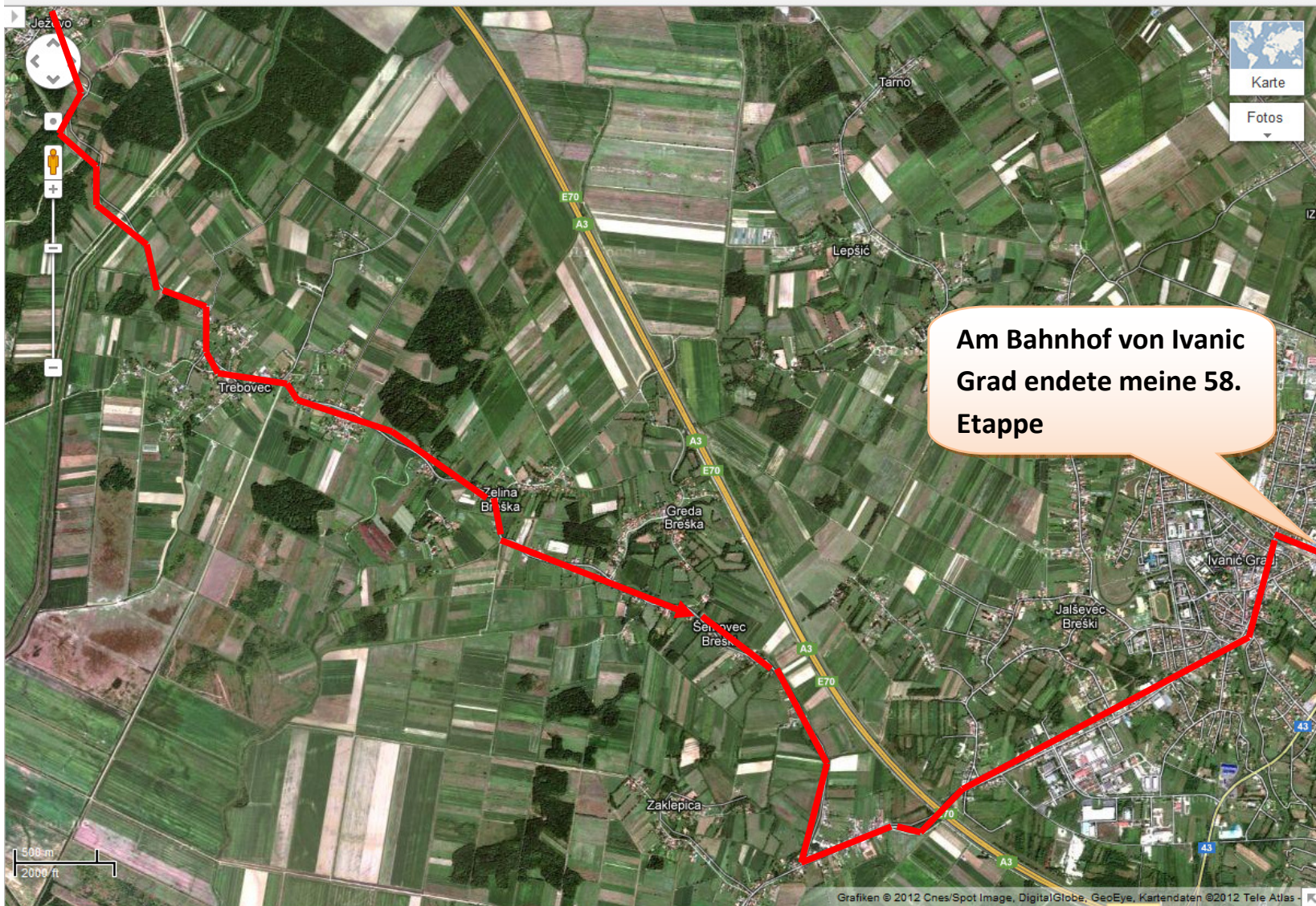
+ Mitteilen



- Windows logo
- Excel icon
- Word icon
- PowerPoint icon
- Internet Explorer icon
- Firefox icon
- Safari icon
- PDF icon
- Folder icon
- System tray icons: Network, Volume, Safely Remove Hardware, System Clock

22:31
20.04.2012

Karte 181



Am Bahnhof von Ivanic Grad endete meine 58. Etappe

500 m
2000 ft

Windows taskbar with icons for Start, Office applications (Word, Excel, PowerPoint, Outlook, Access, Publisher), Internet Explorer, Firefox, and various system utilities. The system clock shows 22:34 on 20.04.2012.

Karte 182

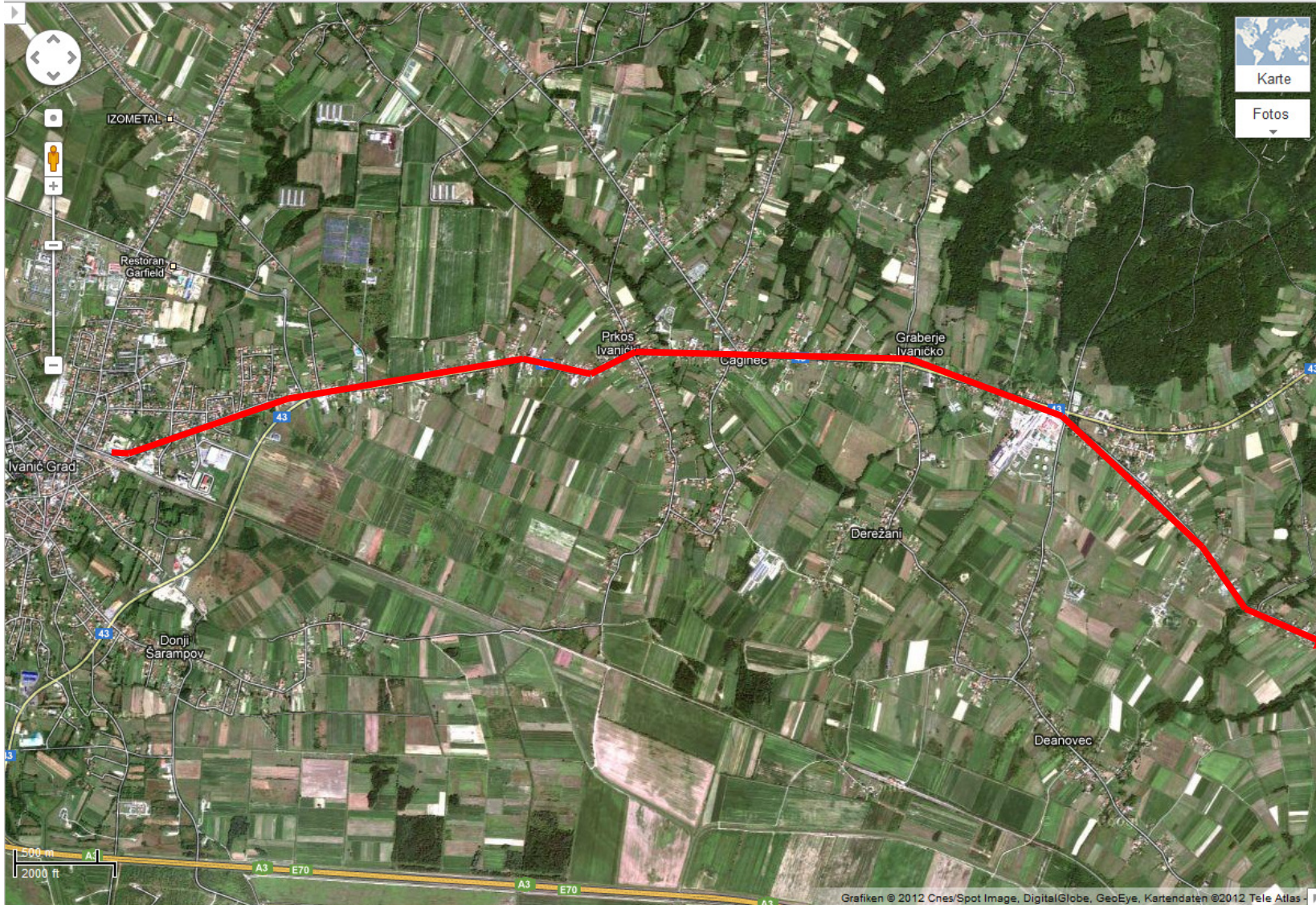


ljubljana



Horst Gunkel

+ Mitteilen



-
-
-
-
-
-
-
-
-
-

22:35
20.04.2012

Karte 183

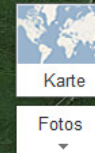


ljubljan



Horst Gunkel

+ Mitteilen



22:39
20.04.2012

Karte 184

Google

ljubljana



Horst Gunkel

+ Mitteilen



The taskbar on the right side of the screen displays several application icons, including Microsoft Word, PowerPoint, Firefox, and a folder icon. Below these are system tray icons for network, volume, and power. The system clock shows the time as 22:40 and the date as 20.04.2012.



ljubljana

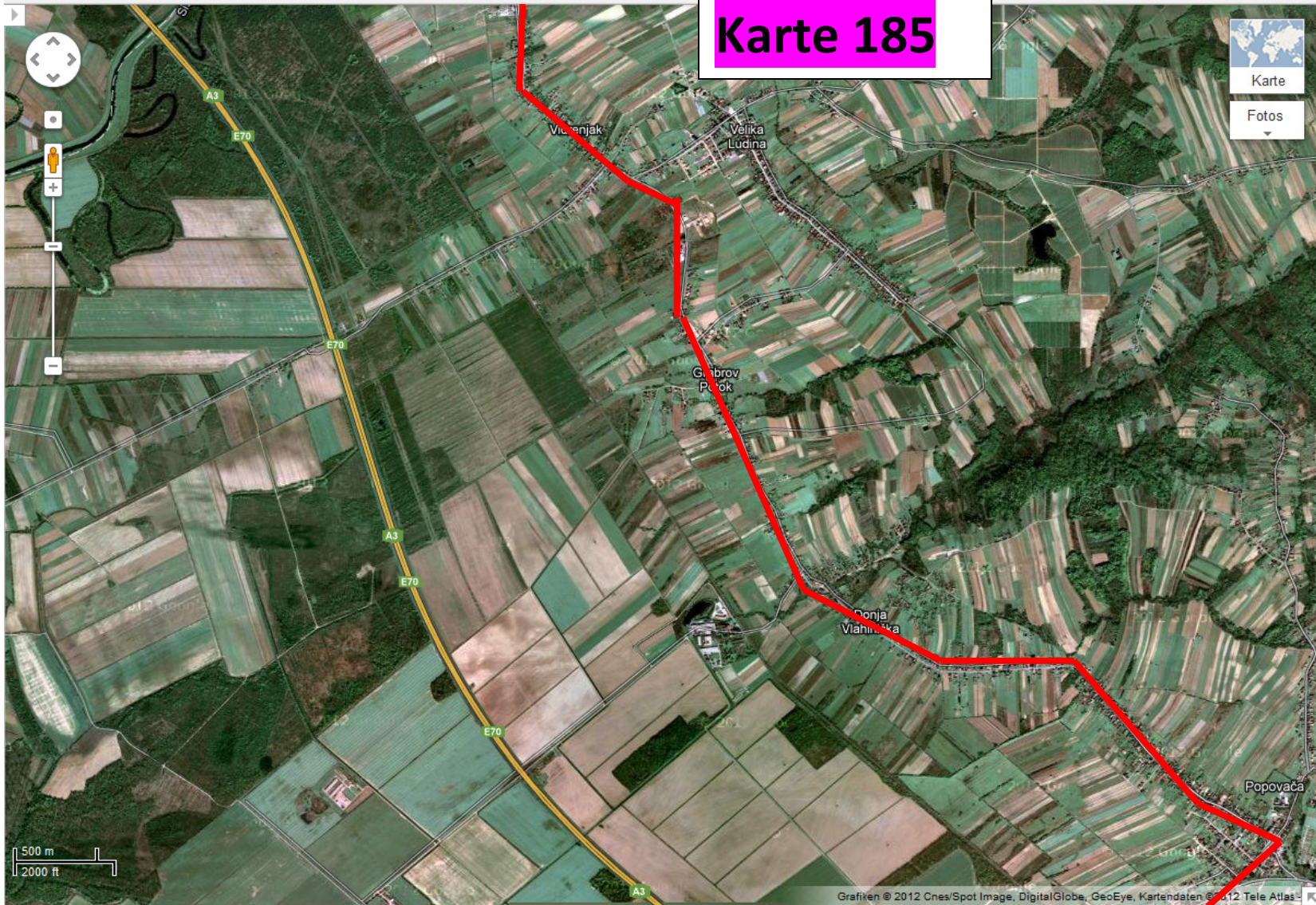


Horst Gunkel

+ Mitteilen



Karte 185



Karte

Fotos

22:42

20.04.2012

Karte 186



Karte 187

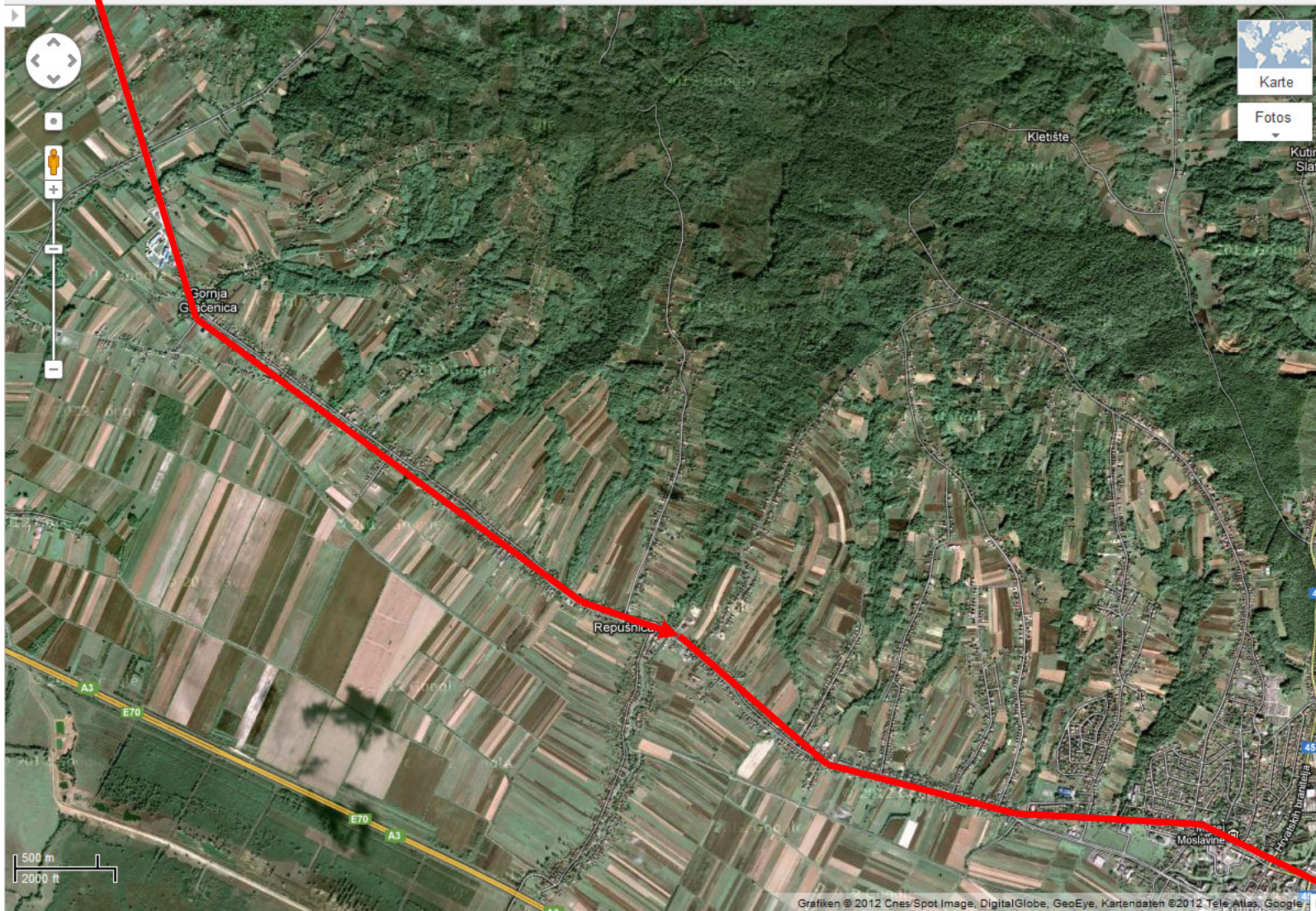


ljubljana



Horst Gunkel

+ Mitteilen



- Windows Start button
- Microsoft Excel icon
- Microsoft Word icon
- Microsoft PowerPoint icon
- Firefox icon
- Internet Explorer icon
- Skype icon
- Adobe Reader icon
- File Explorer icon
- System tray icons: Volume, Network, Safely Remove Hardware, System Clock

22:44
20.04.2012

Karte 188

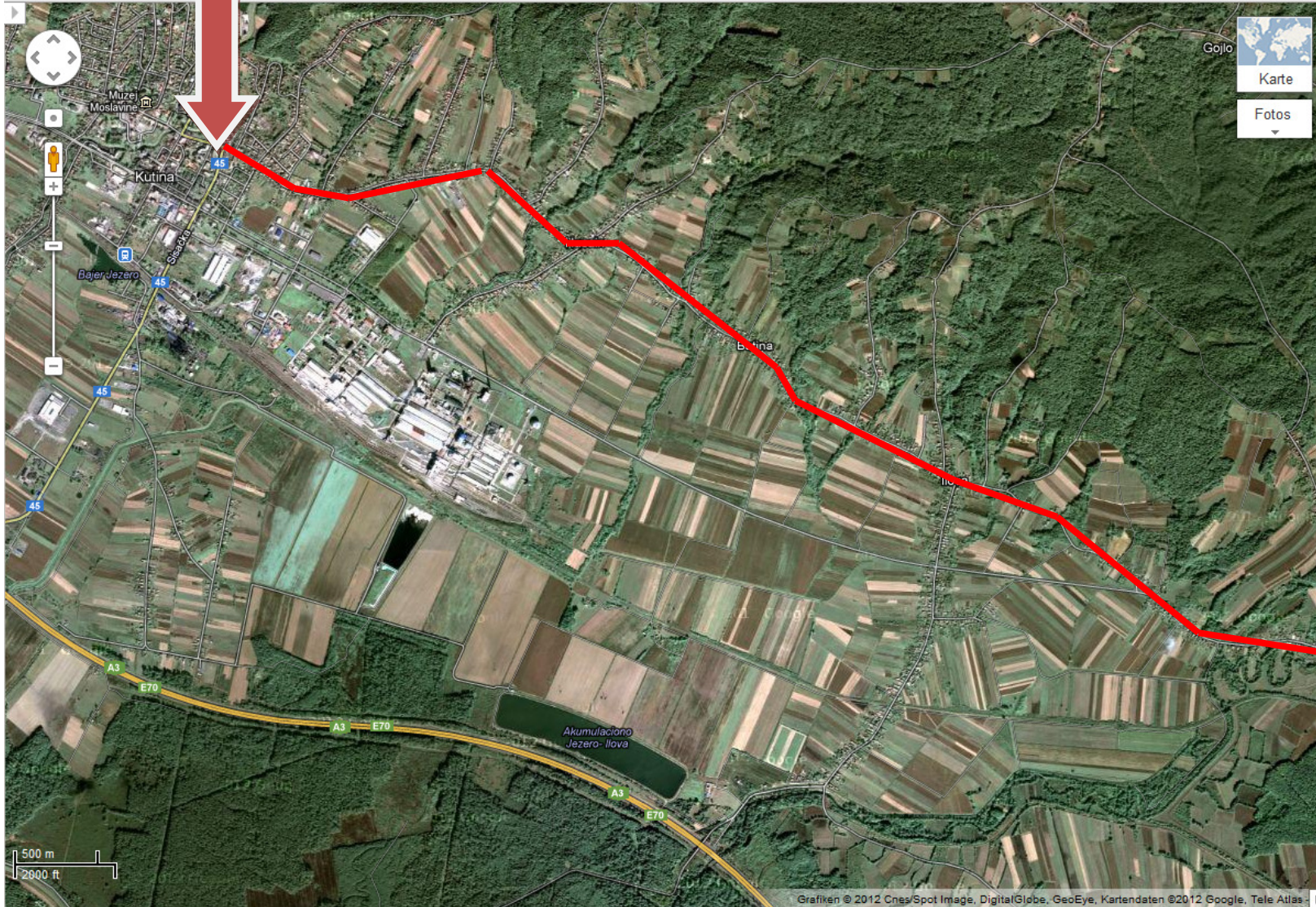
Google

ljubljana



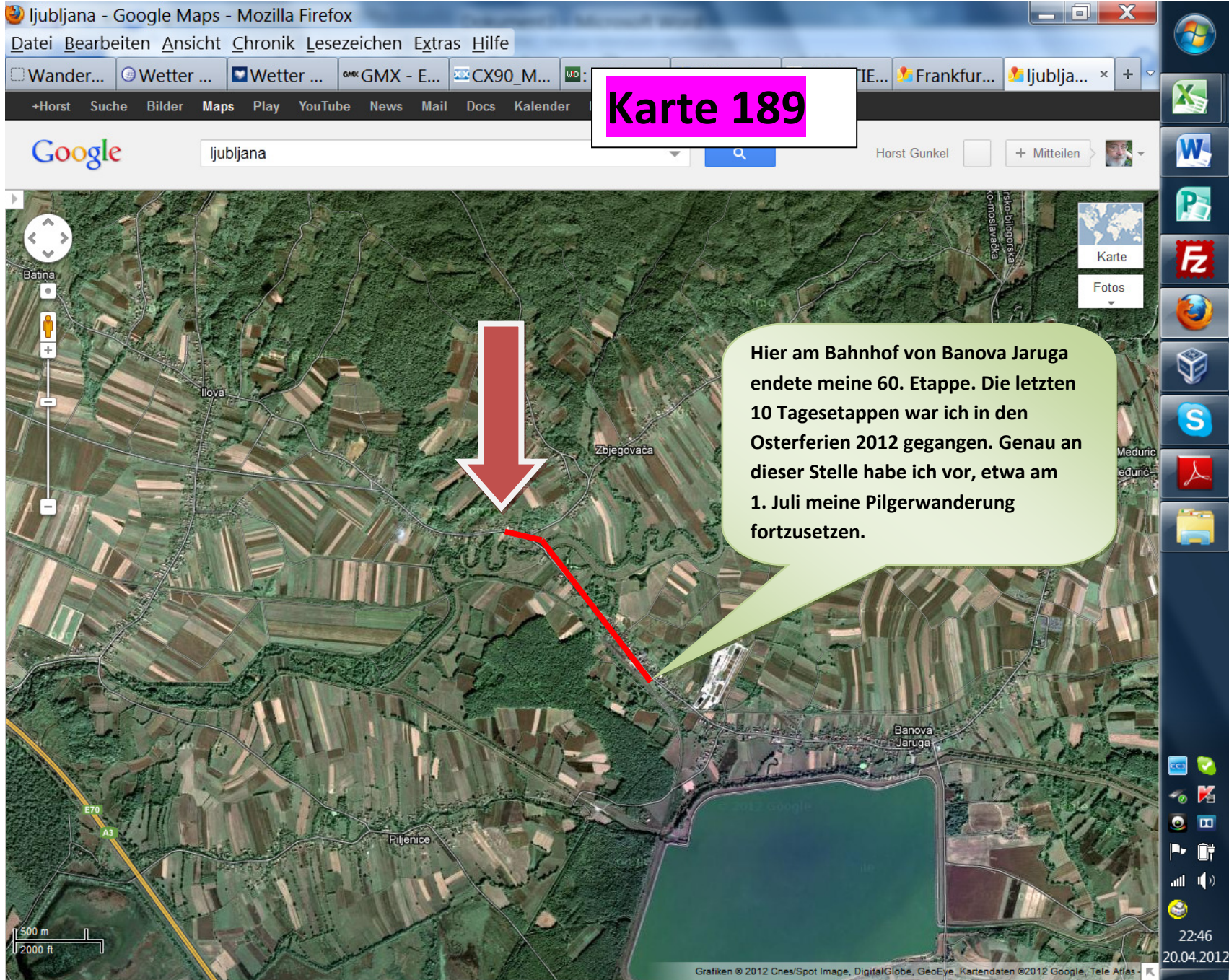
Horst Gunkel

+ Mitteilen



- Windows logo
- Excel icon
- Word icon
- PowerPoint icon
- Firefox icon
- Internet Explorer icon
- 3D Home icon
- S icon
- PDF icon
- Folder icon
- System tray icons: Network, Volume, Safely Remove Hardware, System Clock

22:45
20.04.2012



Karte 189

Hier am Bahnhof von Banova Jaruga endete meine 60. Etappe. Die letzten 10 Tagesetappen war ich in den Osterferien 2012 gegangen. Genau an dieser Stelle habe ich vor, etwa am 1. Juli meine Pilgerwanderung fortzusetzen.